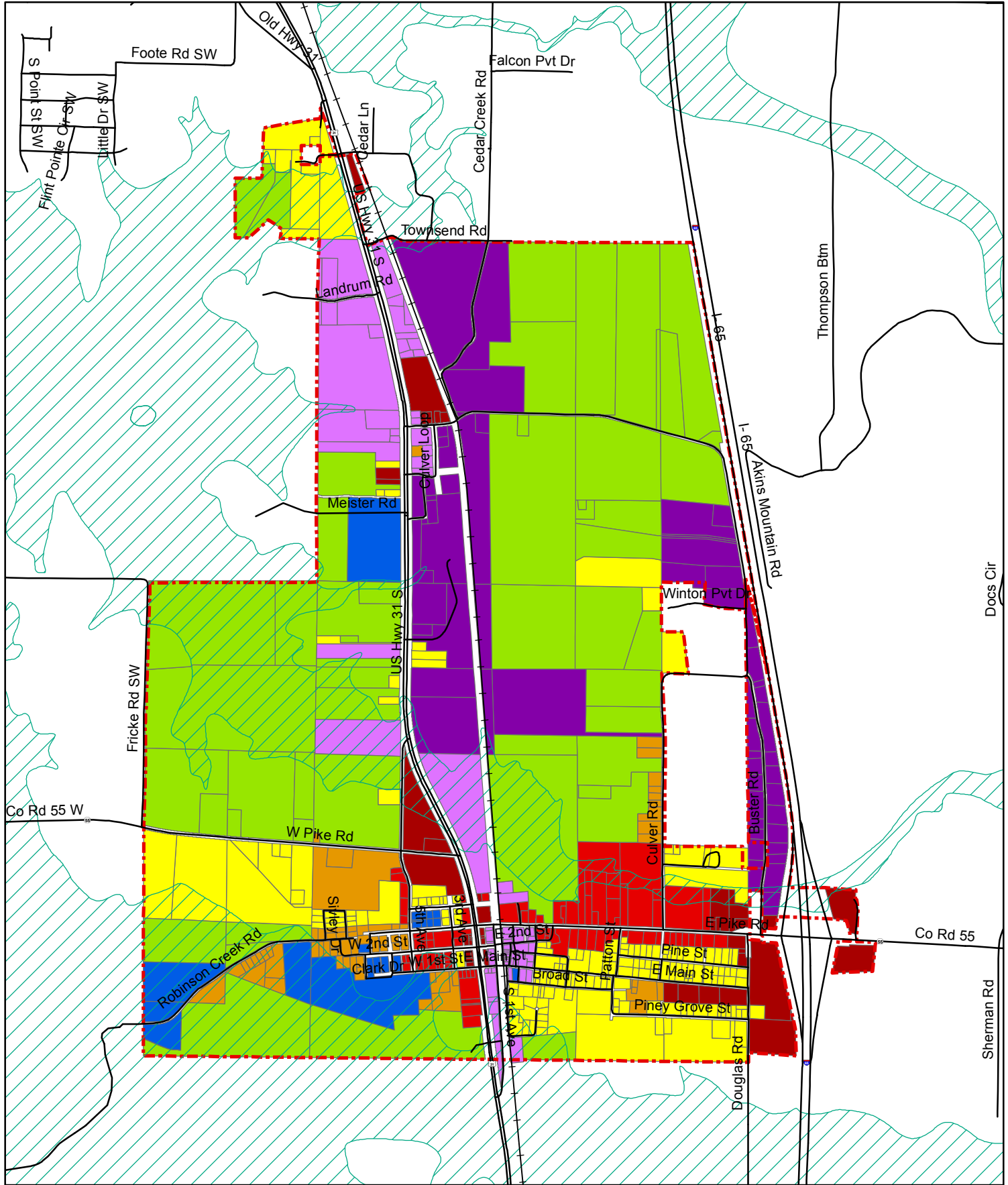


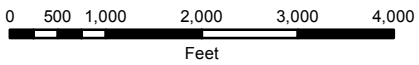
TOWN OF FALKVILLE ZONING MAP



This Official Zoning Map of the Town of Falkville, Alabama establishes the location and boundaries of the zoning districts effective the _____ day of _____, 2008 as recorded in the records of the Clerk and Recorder of Morgan County, Alabama. In Book _____ Page _____

AT TEST: _____ Mayor
 _____ Town Clerk

Reasoning and Amendments:		Zoning	
Date:	Parcel Number:	Ordinance Number:	From: To:



STREETS		ZONING DISTRICTS	
	STREETS		R-1 RESIDENTIAL DISTRICT (SINGLE FAMILY)
	RAILROAD		R-2 RESIDENTIAL DISTRICT (MULTI-FAMILY)
	100 YEAR FLOODPLAIN		B-1 BUSINESS DISTRICT (LOCAL SHOPPING)
	FALKVILLE CITY LIMITS		B-2 BUSINESS DISTRICT (GENERAL BUSINESS)
			M-1 INDUSTRIAL DISTRICT (LIGHT INDUSTRY)
			M-2 INDUSTRIAL DISTRICT (GENERAL INDUSTRY)
			AG-1 AGRICULTURE DISTRICT
			I-D INSTITUTIONAL DISTRICT